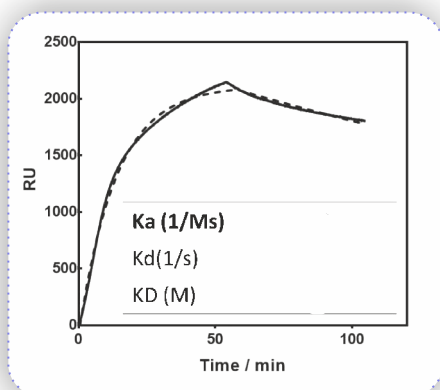
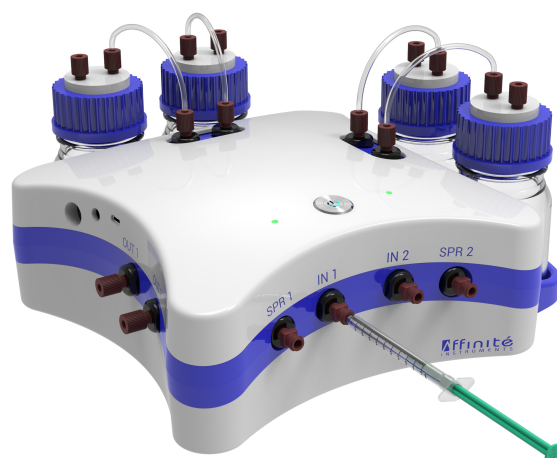


Easy integration with Affinité's portable SPR to get real-time insights into biological pathways and mechanisms with our kinetics module



KNX2 DUAL-CHANNEL INJECTION LOOP MODULE



MAIN FEATURES



Convenient switch between manual or loop injections at any point during a run

Internal trap for eliminating air bubbles



Flow rate: 5-150 $\mu\text{L}/\text{min}$

Custom sample loop sizes available



High efficiency pulse dampening for reduced background noise

Single or dual channels



Inert material tubing for biological and chemical sample compatibility

Simple prime and flow control functions with intuitive GUI

